



THE PHOENIX, BARRETT STREET
LONDON, W1U

Asking Price £2,250,000 Leasehold

T. +44 (0) 20 7935 0011
E. enquire@napierwatt.co.uk
WWW.NAPIERWATT.CO.UK

NAPIER WATT

PROPERTY CONSULTANTS

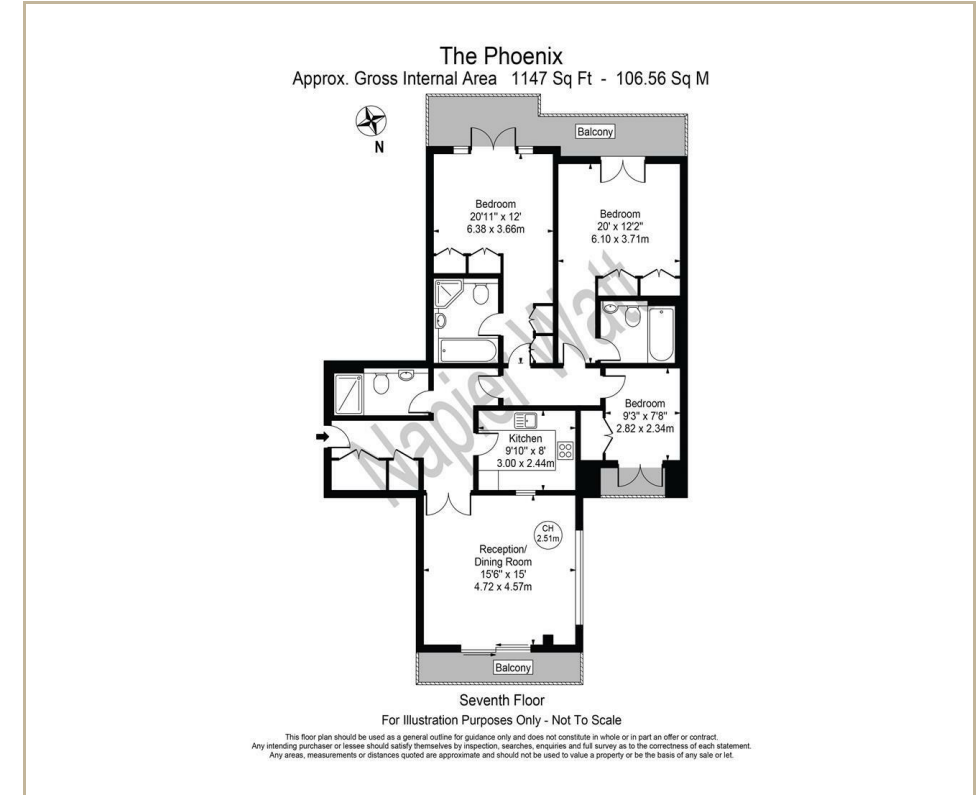
Description

Extremely bright 3 bedroom, 3 bathroom apartment on the sub-penthouse, seventh floor with views on to Selfridges.

The flat is very well laid out and offers a spacious reception and fitted kitchen. 3 double bedrooms with 2 en-suites and a separate bathroom. In addition, there are three balconies and a parking space available by

separate negotiation.

The Phoenix is a popular modern purpose built block with live in, day porter, lifts, and excellent location with 50 m of Selfridges and 100m to Oxford Street with Bond Street underground being within a short stroll.



TERMS

Leasehold - 999 years from 1 April 1997 ie 976

Ground Rent - £350 pa

Service Charge £4,375 per half year and additional £175 per half year for parking

For Clarification we wish to inform prospective purchasers that we have prepared these sales particulars as a general guide. We have not carried out a survey, nor tested the services, appliances and specific fittings. Room sizes are approximate and rounded: they are taken between internal wall surfaces and therefore include cupboards/shelves, etc. Accordingly, they should not be relied upon for carpets and furnishings. Formal notice is given that all fixtures and fittings, carpeting, curtains/blinds and kitchen equipment, whether fitted or not, are deemed to be removable by the vendor unless specifically itemised within these sales particulars.

T. +44 (0) 20 7935 0011
E. enquire@napierwatt.co.uk
WWW.NAPIERWATT.CO.UK

NAPIER WATT
PROPERTY CONSULTANTS